



FLANGES

SLIP-ON RAISED FACE -
FORGED 150# - CARBON STEEL

FEATURES & APPLICATIONS:

- A flange is a method of connecting pipes, valves, pumps & other equipment to form a piping system.



CARBON STEEL

FORGED 150	
ID	CARBON STEEL
1"	SOF100
1-1/4"	SOF125
1-1/2"	SOF150
2"	SOF200
2-1/2"	SOF250
3"	SOF300
4"	SOF400
5"	SOF500
6"	SOF600
8"	SOF800
10"	SOF1000
12"	SOF1200

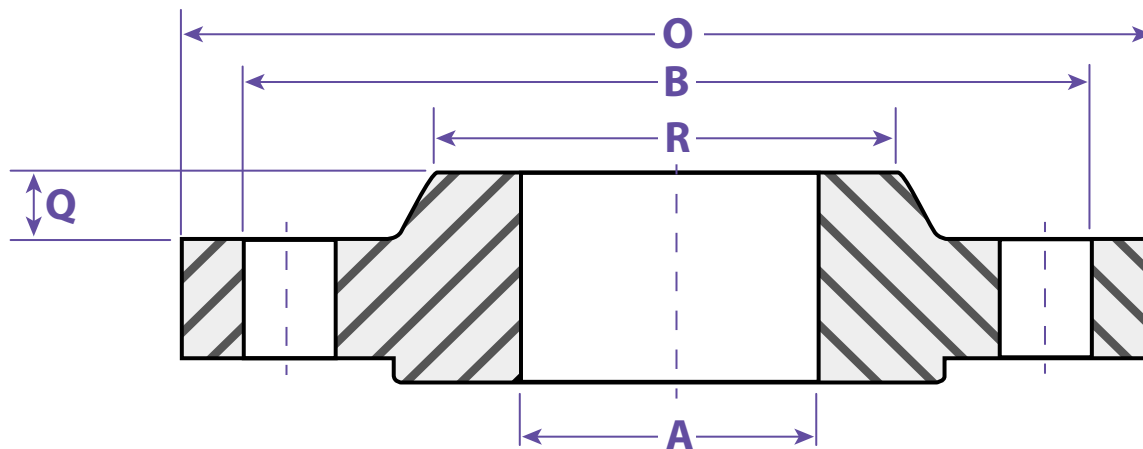


Information contained on this page is for general information purposes only. Seal Fast Inc. assumes no responsibility for errors or omissions for this product.



SEALFAST
THE SIMPLE SOLUTION

PIPE FITTINGS & VALVES



Dimensions						
Pipe Size	Overall Dim	Raised Face	Raised Face Dim	Bolt Holes # / Dim	Bolt Hole Circle	Part #
A	O	Q (1/16 thickness)	R	B		
1"	4.25	.56	2.00	4-0.62	3.12	SOF100
1-1/4"	4.62	.62	2.50	4-0.62	3.50	SOF125
1-1/2"	5.00	.68	2.88	4-0.62	3.88	SOF150
2"	6.00	.75	3.62	4-0.75	4.75	SOF200
2-1/2"	7.00	.88	3.56	4-0.75	5.50	SOF250
3"	7.50	.94	4.25	4-0.75	6.00	SOF300
4"	9.00	.94	5.31	8-0.75	7.50	SOF400
5"	10.00	.94	6.44	8-0.88	8.50	SOF500
6"	11.00	1.00	7.56	8-0.88	9.50	SOF600
8"	13.50	1.12	10.62	8-0.88	11.75	SOF800
10"	16.00	1.19	12.75	12-1.00	14.25	SOF1000
12"	19.00	1.25	15.00	12-1.00	17.00	SOF1200

TITLE FLANGES - SLIP-ON RAISED FACE / FORGED 150#

DISCLAIMER

All drawings and specifications are subject to change without notice. Drawings represent general dimensions of our products. Seal Fast cannot guarantee the dimensions of the part will exactly match those in the drawing. This drawing is the property of Seal Fast Inc. Copying or reproduction of this drawing is expressly prohibited.

MATERIAL

Carbon Steel

DRAWING NOT TO SCALE

PART

SOF...

